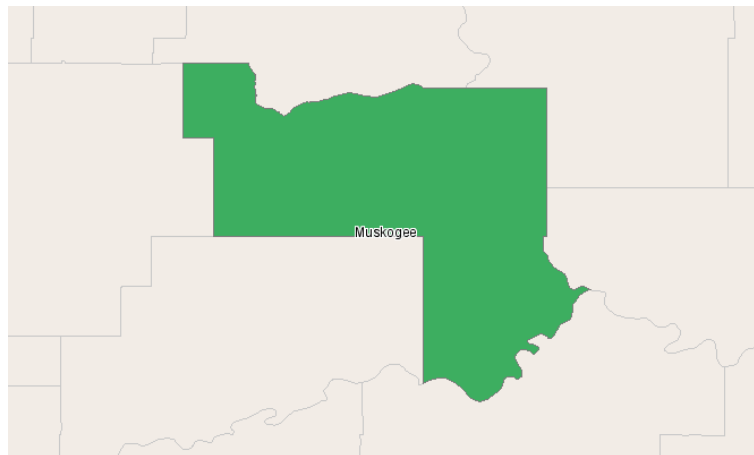


Eastern Workforce Investment Board



P.O. Box 2698
Muskogee, OK, Oklahoma 74402

Industry Overview Report



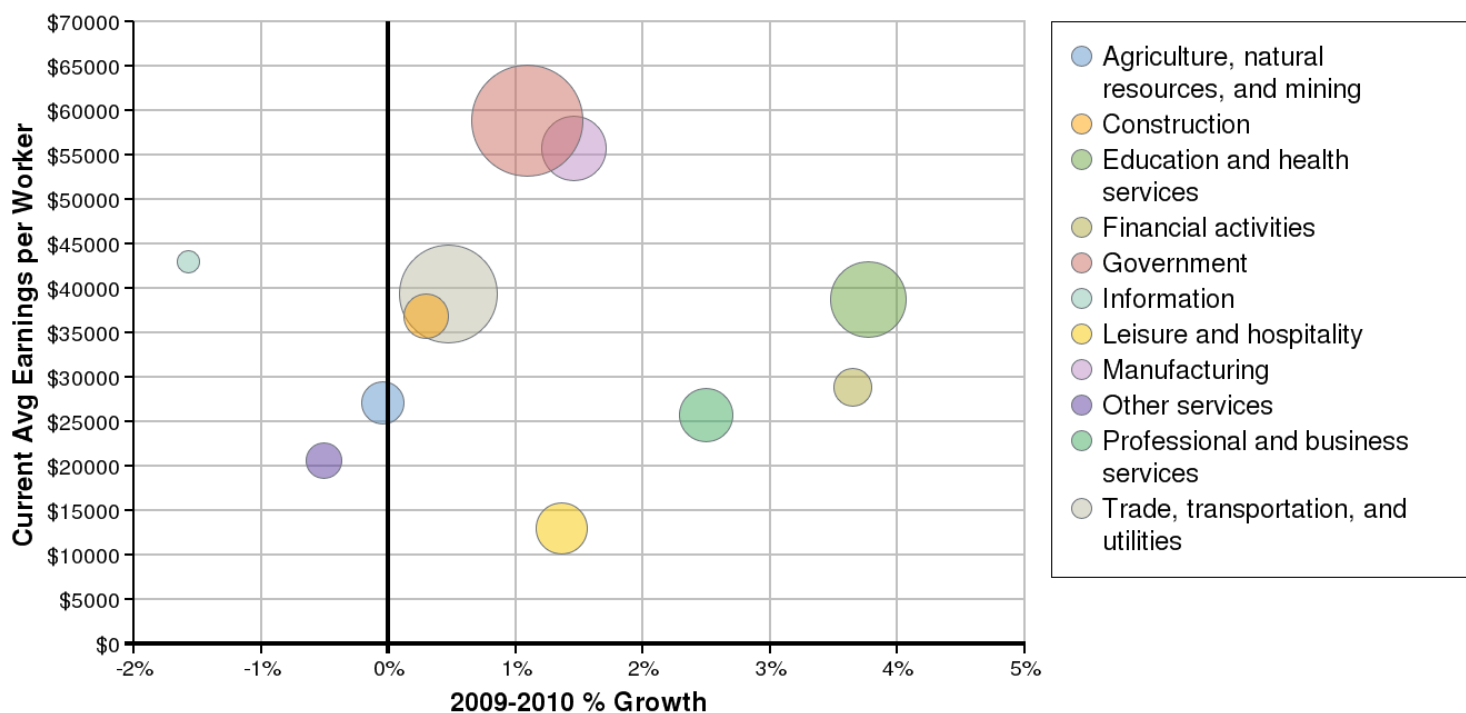
Region Info

Region: Muskogee County

County Areas: Muskogee, Oklahoma (40101)

Industry Size and Growth

2009 - 2010 Size and Growth

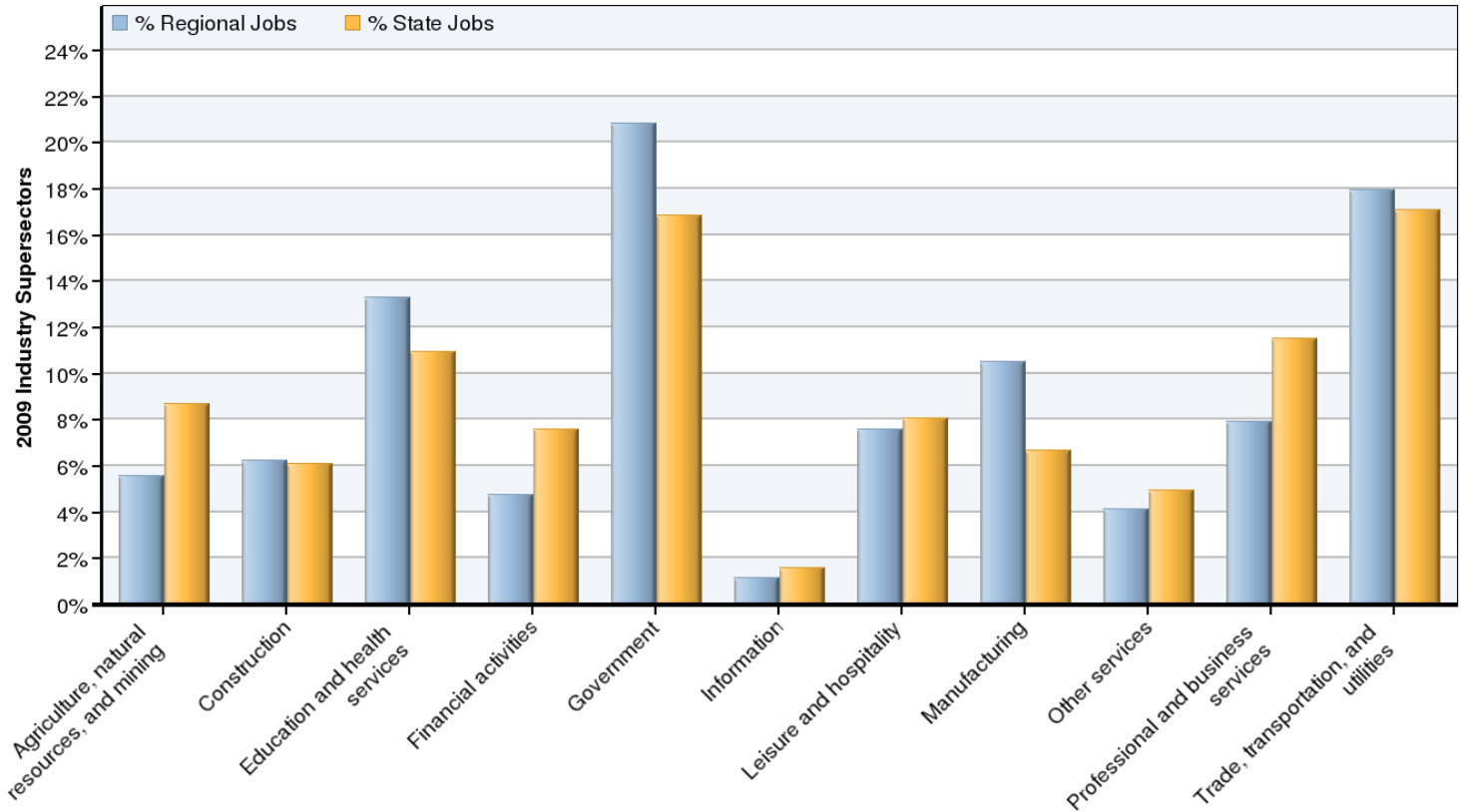


*Bubble size represents 2009 jobs in each supersector.

Description	2009 Jobs	2010 Jobs	Growth	% Growth	Current EPW
Agriculture, natural resources, and mining	2,113	2,112	-1	0%	\$27,074
Construction	2,369	2,376	7	0%	\$36,832
Education and health services	5,045	5,235	190	4%	\$38,773
Financial activities	1,809	1,875	66	4%	\$28,903
Government	7,893	7,979	86	1%	\$58,897
Information	445	438	-7	-2%	\$43,037
Leisure and hospitality	2,876	2,915	39	1%	\$12,966
Manufacturing	3,986	4,044	58	1%	\$55,803
Other services	1,564	1,556	-8	-1%	\$20,575
Professional and business services	3,007	3,082	75	2%	\$25,798
Trade, transportation, and utilities	6,816	6,848	32	0%	\$39,361
Total	37,924	38,459	535	1%	\$39,927

Source: EMSI Complete Employment - 4th Quarter 2009

2009 Industrial Makeup



Description	2009 Regional Jobs	% Regional Jobs	2009 State Jobs	% State Jobs
Agriculture, natural resources, and mining	2,113	5.6%	185,976	8.7%
Construction	2,369	6.2%	130,007	6.1%
Education and health services	5,045	13.3%	233,810	10.9%
Financial activities	1,809	4.8%	161,992	7.6%
Government	7,893	20.8%	361,147	16.9%
Information	445	1.2%	33,938	1.6%
Leisure and hospitality	2,876	7.6%	172,838	8.1%
Manufacturing	3,986	10.5%	142,994	6.7%
Other services	1,564	4.1%	105,890	4.9%
Professional and business services	3,007	7.9%	246,287	11.5%
Trade, transportation, and utilities	6,816	18.0%	366,126	17.1%

Source: EMSI Complete Employment - 4th Quarter 2009

Data Sources and Calculations

Industry Data

In order to capture a complete picture of industry employment, EMSI basically combines covered employment data from Quarterly Census of Employment and Wages (QCEW) produced by the Department of Labor with total employment data in Regional Economic Information System (REIS) published by the Bureau of Economic Analysis (BEA), augmented with County Business Patterns (CBP) and Nonemployer Statistics (NES) published by the U.S. Census Bureau. Projections are based on the latest available EMSI industry data, 15-year past local trends in each industry, growth rates in statewide and (where available) sub-state area industry projections published by individual state agencies, and (in part) growth rates in national projections from the Bureau of Labor Statistics.

State Data Sources

This report uses state data from the following agencies: Oklahoma Employment Security Commission.