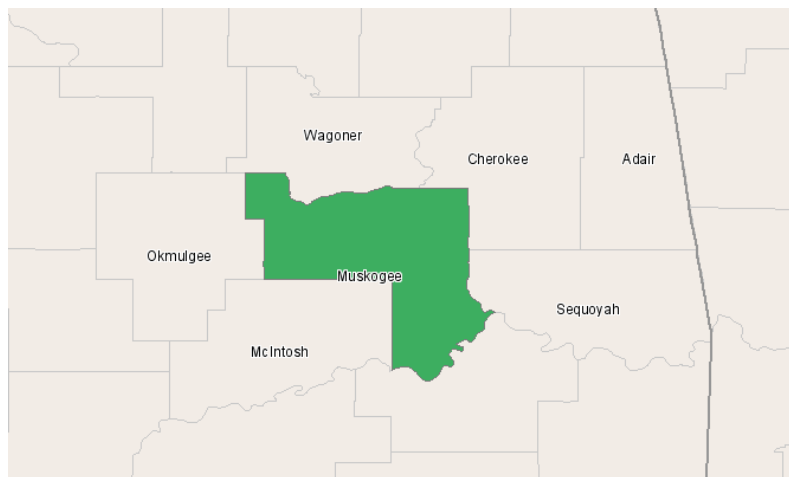


# Eastern Workforce Investment Board



P.O. Box 2698  
Muskogee, Oklahoma 74402

## Industry Overview Report

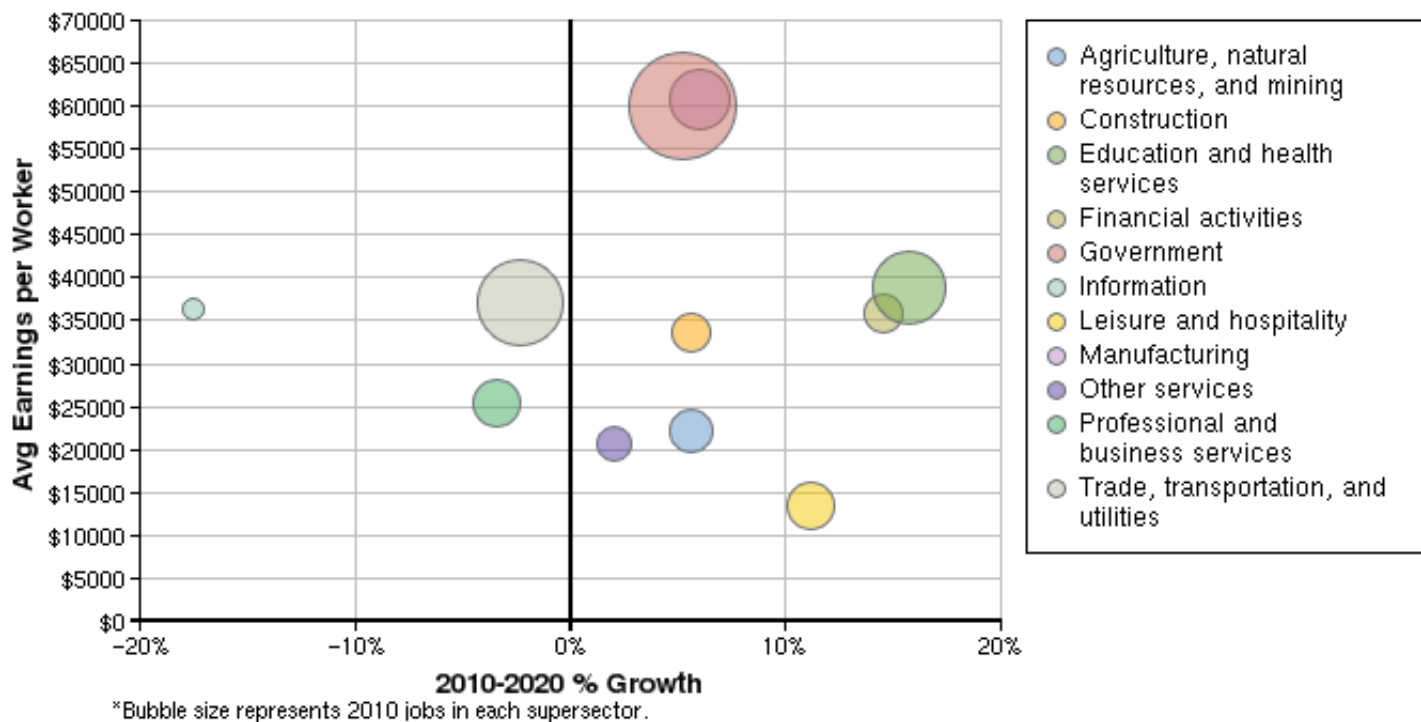


## Region Info

Region: Muskogee, Oklahoma (40101)

## Industry Size and Growth

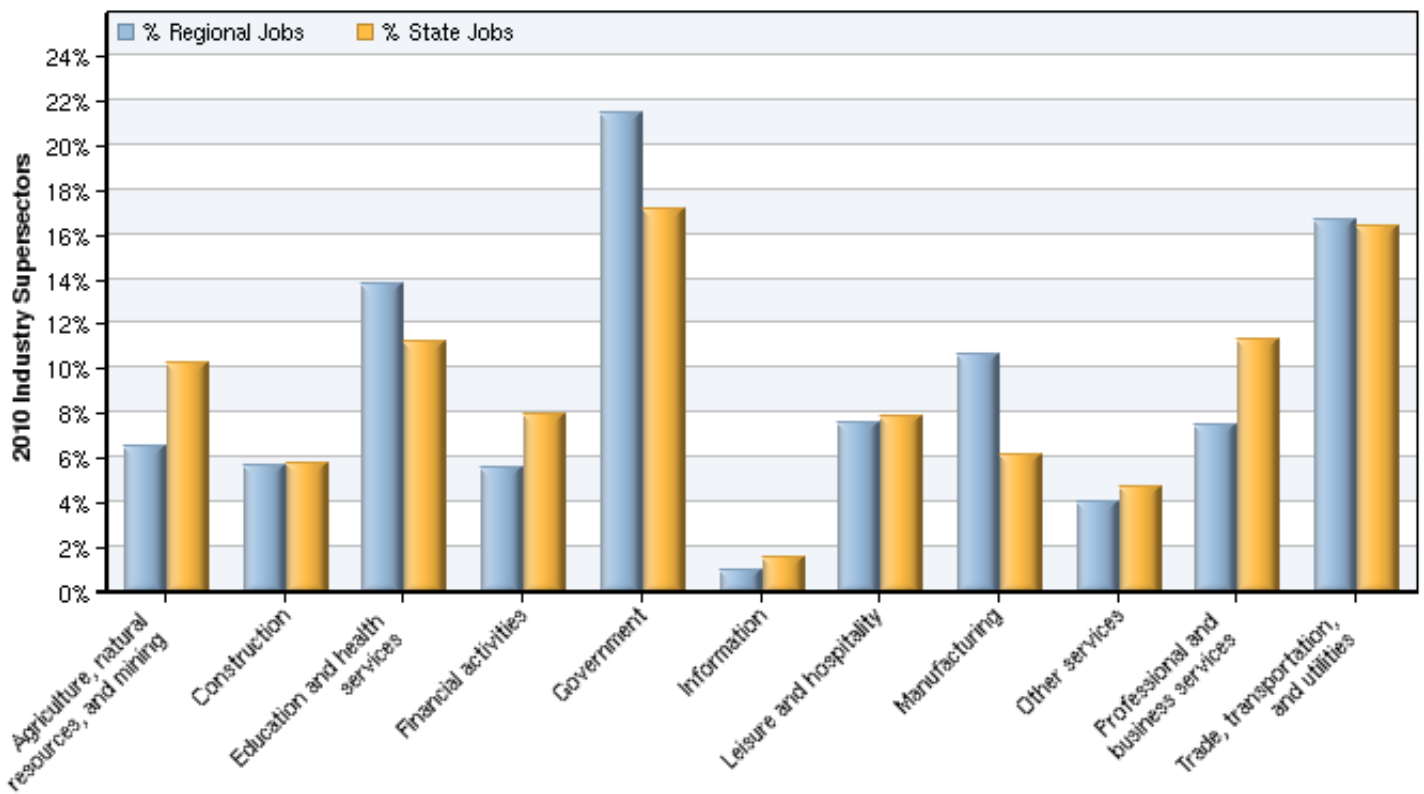
### 2010 - 2020 Size and Growth



Description	2010 Jobs	2020 Jobs	Growth	% Growth	2010 EPW
Agriculture, natural resources, and mining	2,476	2,615	139	6%	\$22,269
Construction	2,153	2,273	120	6%	\$33,624
Education and health services	5,256	6,083	827	16%	\$38,755
Financial activities	2,110	2,417	307	15%	\$35,848
Government	8,173	8,601	428	5%	\$59,965
Information	365	301	-64	-18%	\$36,265
Leisure and hospitality	2,893	3,217	324	11%	\$13,465
Manufacturing	4,043	4,284	241	6%	\$60,737
Other services	1,533	1,564	31	2%	\$20,641
Professional and business services	2,842	2,744	-98	-3%	\$25,499
Trade, transportation, and utilities	6,349	6,202	-147	-2%	\$37,210
<b>Total</b>	<b>38,193</b>	<b>40,303</b>	<b>2,110</b>	<b>6%</b>	<b>\$40,192</b>

Source: EMSI Complete Employment - 4th Quarter 2010

### 2010 Industrial Makeup



Description	2010 Regional Jobs	% Regional Jobs	2010 State Jobs	% State Jobs
Agriculture, natural resources, and mining	2,476	6.5%	218,137	10.2%
Construction	2,153	5.6%	122,039	5.7%
Education and health services	5,256	13.8%	238,162	11.2%
Financial activities	2,110	5.5%	170,097	8.0%
Government	8,173	21.4%	365,372	17.1%
Information	365	1.0%	31,719	1.5%
Leisure and hospitality	2,893	7.6%	167,297	7.9%
Manufacturing	4,043	10.6%	130,171	6.1%
Other services	1,533	4.0%	99,197	4.7%
Professional and business services	2,842	7.4%	241,341	11.3%
Trade, transportation, and utilities	6,349	16.6%	347,561	16.3%

Source: EMSI Complete Employment - 4th Quarter 2010

## Data Sources and Calculations

---

### Industry Data

In order to capture a complete picture of industry employment, EMSI basically combines covered employment data from Quarterly Census of Employment and Wages (QCEW) produced by the Department of Labor with total employment data in Regional Economic Information System (REIS) published by the Bureau of Economic Analysis (BEA), augmented with County Business Patterns (CBP) and Nonemployer Statistics (NES) published by the U.S. Census Bureau. Projections are based on the latest available EMSI industry data, 15-year past local trends in each industry, growth rates in statewide and (where available) sub-state area industry projections published by individual state agencies, and (in part) growth rates in national projections from the Bureau of Labor Statistics.

### State Data Sources

This report uses state data from the following agencies: Oklahoma Employment Security Commission.