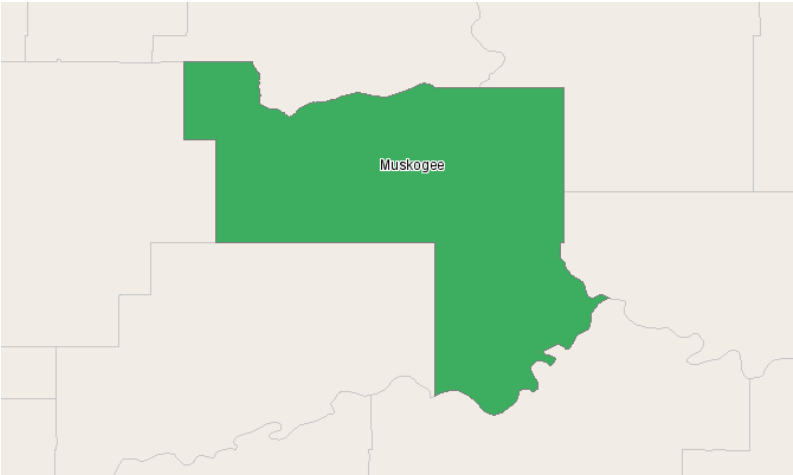


Eastern Workforce Investment Board, Inc.



P.O. Box 2698
Muskogee, Oklahoma 74402

Industry Overview Report



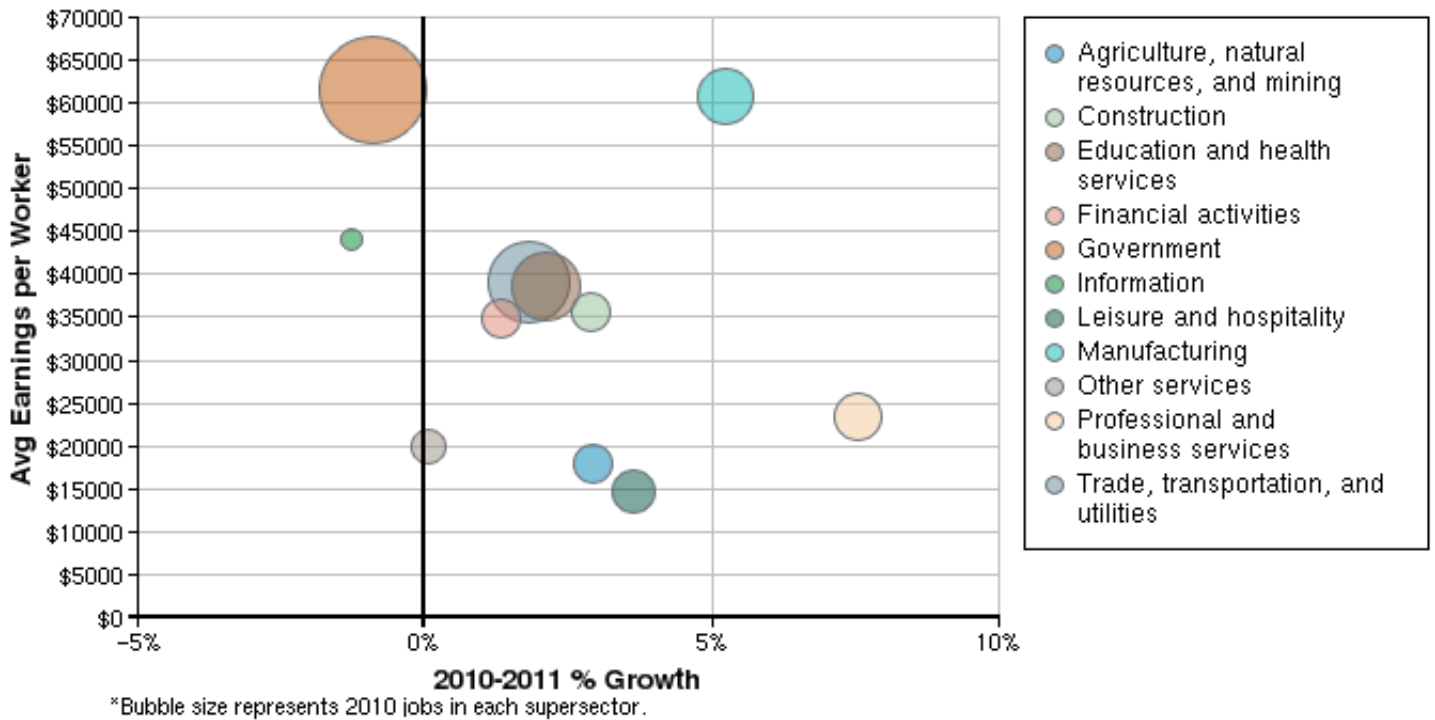
Region Info

Region: Muskogee

MSA Areas: Muskogee, OK (34780)

Industry Size and Growth

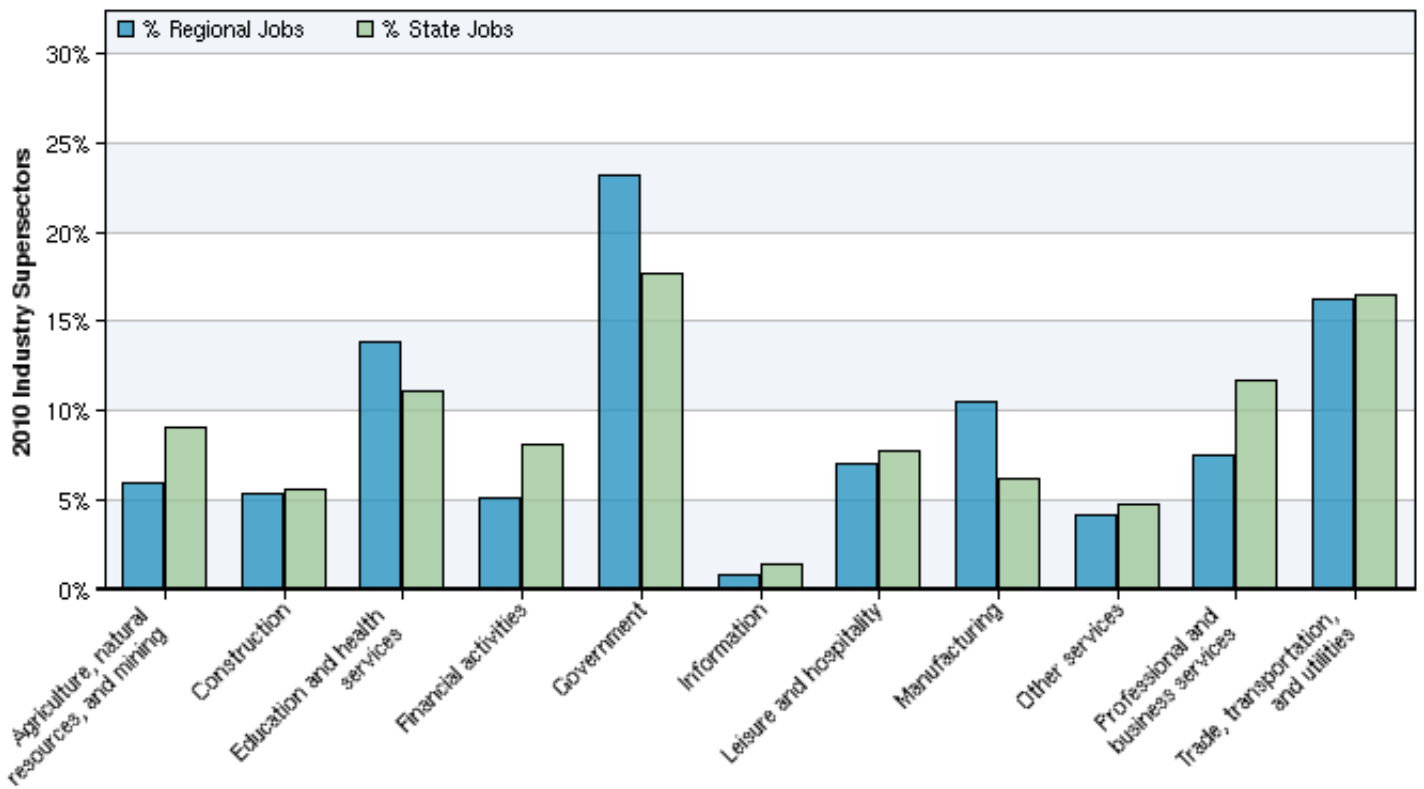
2010 - 2011 Size and Growth



Description	2010 Jobs	2011 Jobs	Growth	% Growth	2011 EPW
Agriculture, natural resources, and mining	2,295	2,362	67	3%	\$17,869
Construction	2,042	2,101	59	3%	\$35,689
Education and health services	5,325	5,437	112	2%	\$38,629
Financial activities	1,955	1,981	26	1%	\$34,967
Government	8,865	8,785	-80	-1%	\$61,631
Information	317	313	-4	-1%	\$44,178
Leisure and hospitality	2,718	2,817	99	4%	\$14,743
Manufacturing	4,035	4,246	211	5%	\$60,776
Other services	1,595	1,596	1	0%	\$19,854
Professional and business services	2,904	3,123	219	8%	\$23,461
Trade, transportation, and utilities	6,240	6,352	112	2%	\$39,082
Total	38,291	39,114	823	2%	\$41,022

Source: EMSI Complete Employment - 2011.4

2010 Industrial Makeup



Description	2010 Regional Jobs	% Regional Jobs	2010 State Jobs	% State Jobs
Agriculture, natural resources, and mining	2,295	6.0%	192,584	9.1%
Construction	2,042	5.3%	118,984	5.6%
Education and health services	5,325	13.9%	233,726	11.1%
Financial activities	1,955	5.1%	170,718	8.1%
Government	8,865	23.2%	372,279	17.6%
Information	317	0.8%	29,681	1.4%
Leisure and hospitality	2,718	7.1%	165,135	7.8%
Manufacturing	4,035	10.5%	131,043	6.2%
Other services	1,595	4.2%	101,885	4.8%
Professional and business services	2,904	7.6%	247,330	11.7%
Trade, transportation, and utilities	6,240	16.3%	347,418	16.5%

Source: EMSI Complete Employment - 2011.4

Data Sources and Calculations

Industry Data

In order to capture a complete picture of industry employment, EMSI basically combines covered employment data from Quarterly Census of Employment and Wages (QCEW) produced by the Department of Labor with total employment data in Regional Economic Information System (REIS) published by the Bureau of Economic Analysis (BEA), augmented with County Business Patterns (CBP) and Nonemployer Statistics (NES) published by the U.S. Census Bureau. Projections are based on the latest available EMSI industry data, 15-year past local trends in each industry, growth rates in statewide and (where available) sub-state area industry projections published by individual state agencies, and (in part) growth rates in national projections from the Bureau of Labor Statistics.